

UPM Timber in brief

UPM Timber is a significant Nordic sawn timber producer. Our four sawmills in Finland have annual capacity of 1.5 M cubic meters of redwood and whitewood sawn timber. UPM Timber employs around 410 people and is headquarter in Tampere.

In our standard and special sawn timber products we use certified raw material and latest sawmilling techniques to produce high quality sawn timber that fulfills customer requirements. Our main customer industries are joinery, packaging, distribution and construction.

www.upmtimber.com

Certificates



All sawn timber produced by UPM Korkeakoski sawmill can be sold either as PEFC™ or FSC® certified.

Korkeakoski mill area

UPM Korkeakoski sawmill is located in Central Finland wood purchasing area together with UPM Jokilaakso papermills and Jyväskylä plywood mill. The mill site covers in total about 33 hectares. Korkeakoski sawmill is in the middle of high quality pine forests in Juupajoki.



UPM Korkeakoski sawmill

Sahantie 10, PO Box 25
FIN-35501 Korkeakoski, Finland
Tel. +358 20 414 149
E-mail: timber@upm.com

www.upmtimber.com

INSTRUCTIONS for visitors



At the site, stay with your host



Use protective equipment provided to you



In an emergency situations follow orders given by your host



Permission is needed for photographing



Smoking is not allowed



Camera surveillance on the site

WELCOME TO UPM Korkeakoski sawmill



UPM – The Biofore Company

Through the renewing of the bio and forest industries, UPM is building a sustainable future across six business areas: UPM Biorefining, UPM Energy, UPM Raflatac, UPM Paper Asia, UPM Paper Europe and North America and UPM Plywood. Our products are made of renewable raw materials and are recyclable.

We serve our customers worldwide. The group employs around 20,000 people and its annual sales are approximately EUR 10 billion. UPM shares are listed on NASDAQ OMX Helsinki.

www.upm.com
www.upmbiofore.com



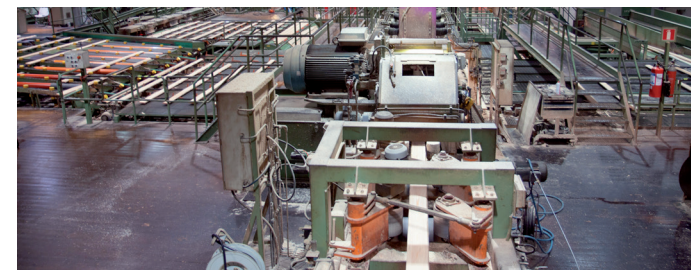
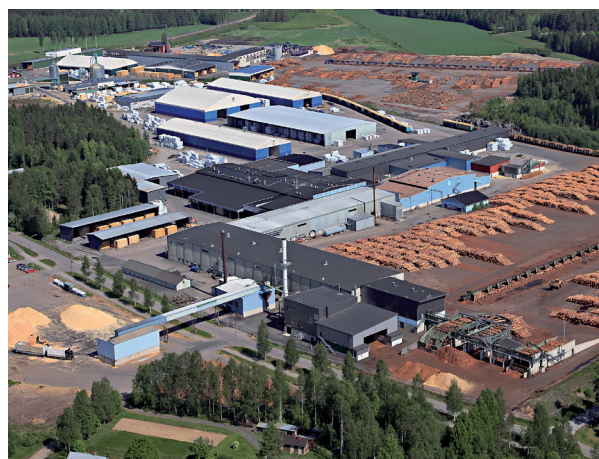
UPM Korkeakoski sawn timber is used in the joinery industry for window frames in the UK.

UPM Korkeakoski sawmill

Korkeakoski sawmill produces redwood sawn timber from certified Nordic pine. The annual production capacity of Korkeakoski sawmill is 330,000 m³ of sawn timber. More than two thirds of the production volume is exported. The main export markets are United Kingdom, Middle East and North African countries.

As raw material Korkeakoski sawmill uses 100% domestic pine purchased mainly from the nearby area forests. UPM is committed to sustainable forest management and forestry methods based on internationally accepted principles.

Currently 70 employees are directly employed by UPM Korkeakoski sawmill and in total 90 people are working in the sawmill area. Sawmill's history is dating back to 1960 when the sawmilling operations started in Korkeakoski. The sawmill has been modernized in various stages and the most significant investment in recent years was the new bio heating plant established in 2013.



UPM Korkeakoski sawmill in brief

Annual capacity	330,000 m ³
Personnel	70 & subcontractors
Raw material	Nordic pine
Production	<ul style="list-style-type: none"> • Log sorting by x-ray • Effective and flexible saw line • Channel kilns • Camera based quality grading
Products	UPM standard sawn timber for construction and UPM Plus special sawn timber for joinery, furniture industry and construction
Drying	KD, special kiln drying 8–16% also possible
Lengths	3.0–5.7 meters
Packing	Length packaged and truck bundled options, covered on five sides

KORKEAKOSKI

Redwood

U/S W-S-M
 Vths WSM
 6ths W-S-M
 S/F W-S-M